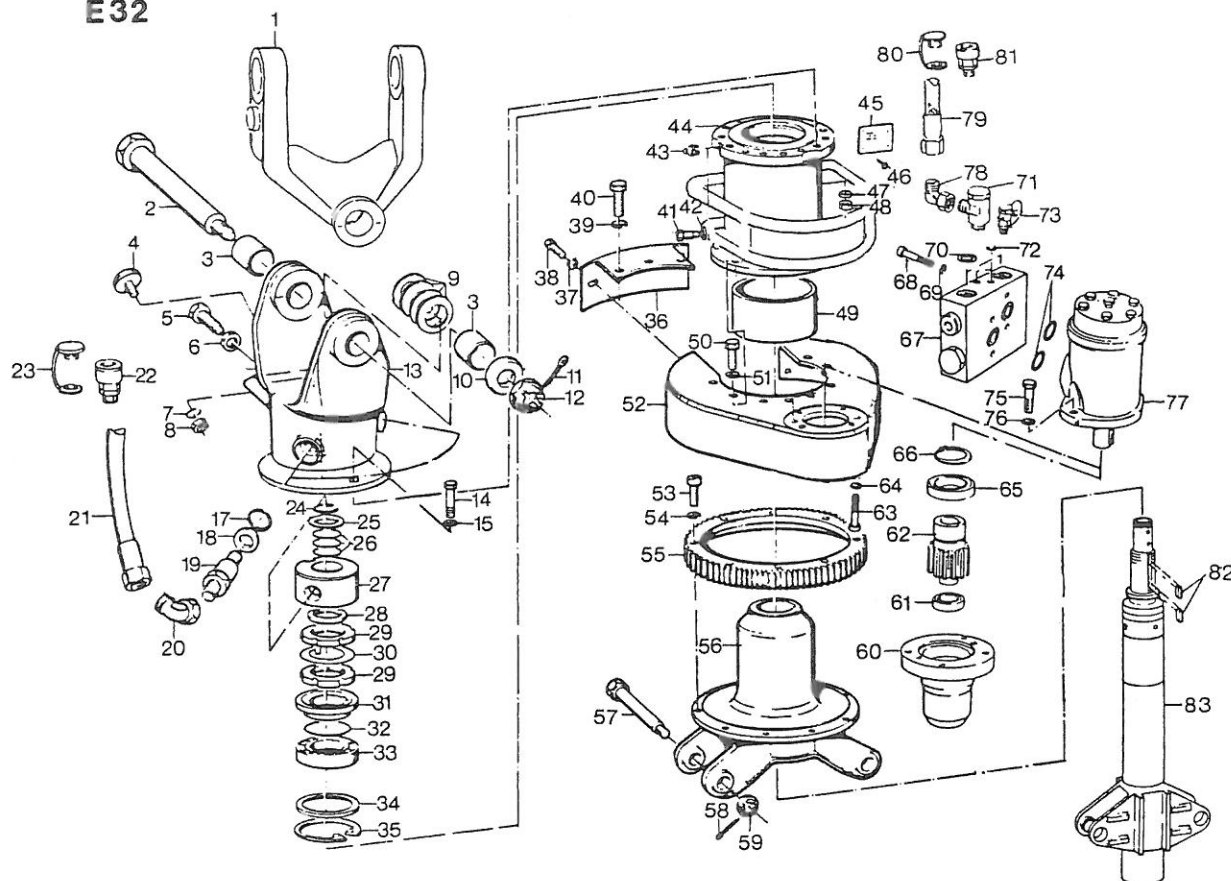


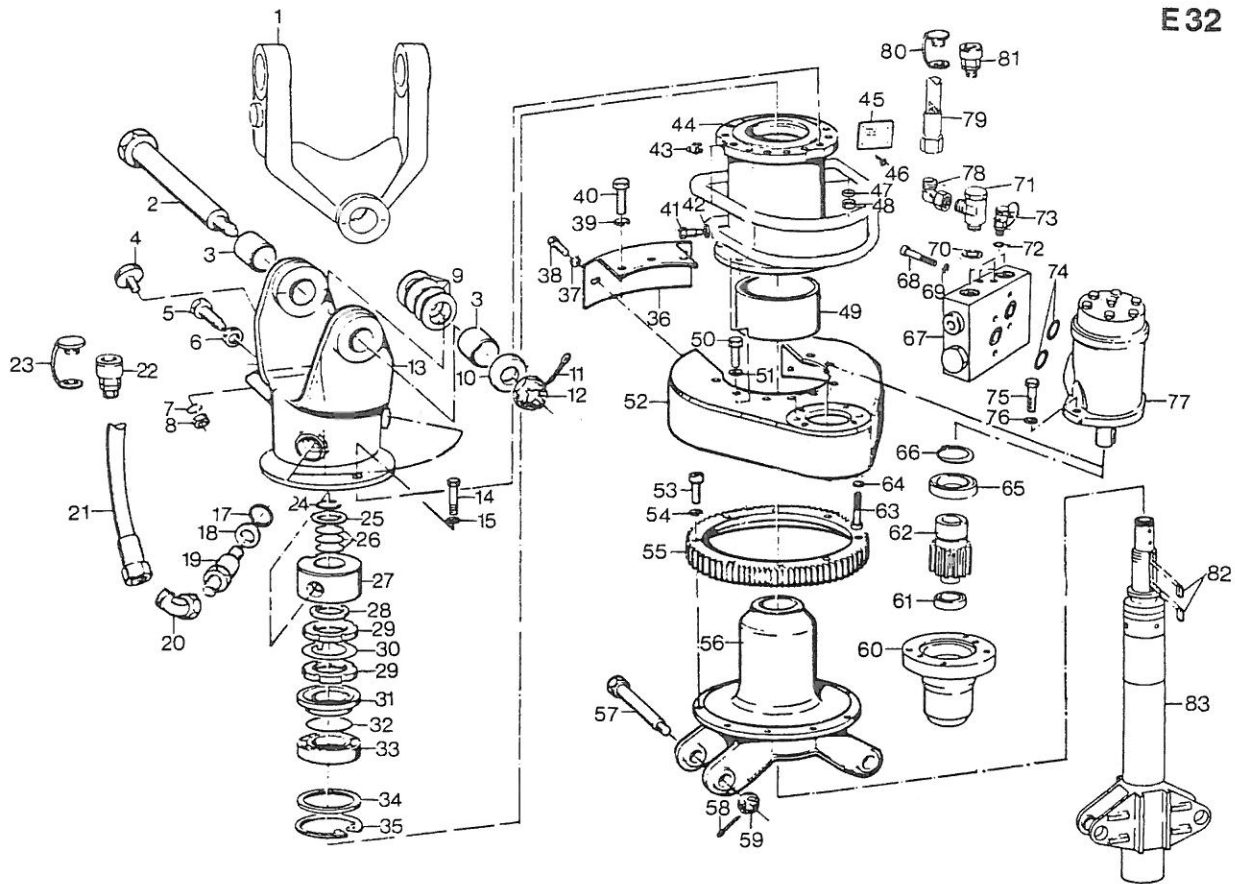
POS NO.	CO DE	ORDER NO.	STK QNT	BENENNUNG	DESCRIPTION	DESIGNATION	BEMERKUNG, REMARK, REMARQUE	14.05.90
		1562909	1	GR AUFH HYDR DR	GRAB SUSP HYD ROT	SUSP DE GR A ROT HYD	POS.2-83	
1			1	GELENKSTUECK	JOINT	ROTULE	TAF.FIG.PLAN.151.276....	
2 V	0652520		1	BOLZEN 45X 285/36X3	PIN 45 X 285/ 36X3	BOULON 45X 285/36X3		
3 V	1208933		2	LAGERBUCHSE	BUSH	COUSSINET		
4	0311164		1	MEGI-ANSCHLAGPUFFER	MEGI STOP BUFFER	BUTOIR EN CAOUTCHOUC		
5	0450719		1	SECHSKANTSCHR M Z	BOLT WITH PIVOT	VIS A TETE SIX PANS+TENON		
6	1671058		1	SECHSKANTMU A3C	NUT A3C	ECROU A SIX PANS A3C		
7 V	1301868		1	FEDERRING A3C	SPRING WASHER A3C	RONDELLE A RESSORT A3C		
8	1397931		1	SECHSKANTMU A3C	NUT A3C	ECROU A SIX PANS A3C		
9	0310914		4	TELLERFEDER	CUP SPRING	RESSORT BELLEVILLE		
10	1631925		1	SCHEIBE A3C	WASHER A3C	RONDELLE A3C		
11 V	1614582		1	SPLINT A3C	SPLIT PIN A3C	GOUPILLE FENDUE A3C		
12	0377402		1	KRONENMUTTER A3C	CROWN NUT A3C	ECROU CRENELE A3C		
13	1562852		1	AUFHAENGEROHR	SUSPENSION PIPE	TUYAU DE SUSPENSION	POS.3,13	
14	1398578		17	SECHSKTSHR A3C	BOLT A3C	VIS A TETE SIX PA A3C		
15	0431705		17	SCHEIBE	WASHER	RONDELLE		
17 D	0470020		2	O-RING	O-RING	JOINT ANNULAIRE		
18	2629296		2	SCHEIBE A3C	WASHER A3C	RONDELLE A3C		
19	2527862		2	VERSCHRAUBUNG	COUPLING	RACCORD		
20	0347962		2	VERSCHRAUBUNG A3C	COUPLING A3C	RACCORD A3C		
21	1626439		2	SCHLAUCHLEITUNG SL 20X1700 P	HOSE LINE HA 20X1700 P	CONDUITE TUYAU FLEXIBLE ENS FLE 20X1700 P	P	DF 09042
22	0379697		2	SCHNELLV KUPPL S E	QUICK REL COUPL PL E	ATTACHE RAPIDE FICHE E	TAF.FIG.PLAN.070.150.00.0..4003	
23	0362869		2	STAUBSTECKER	PROTECTING PLUG	FICHE DE PROTECTION	TAF.FIG.PLAN.070.150.00.0..4003	
24	0307908		1	SEEGERRING	CIRCLIP	ANNEAU DE RETENUE		
25	0107995		1	DISTANZSCHEIBE	SPACER	DISQUE ENTRETOISE		
26 D	2669603		3	ROTOMATICRING	ROTOMATIC RING	BAGUE ROTOMATIC		
27	0026760		1	DREHANSCHLUSS	SLEWING COUPLING	RACCORD TOURNANT		
28	0026817		1	DISTANZSCHEIBE	SPACER	DISQUE ENTRETOISE		
29	0347064		2	NUTMUTTER A3C	NUT A3C	ECROU A3C		
30 V	0447849		1	SICHERUNGSBLECH A3C	LOCKING PLATE A3C	TOLE DE SURETE A3C		

E32



POS	CO	ORDER	STK	BENENNUNG	DESCRIPTION	DESIGNATION	BEMERKUNG, REMARK, REMARQUE	14.05.90
NO.	DE	NO.	QNT					

31 D	0026806	1	ABDICHTRING	SEALING RING	JOINT			
32 D	0330247	1	O-RING	O-RING	JOINT ANNULAIRE			
33 V	0450753	1	VIERPUNKTLAGER	FOUR-POINT BEARING	ROULEMENT A 4 POINTS			
34	0018691	1	DRUCKRING	THRUST RING	BAGUE A PRESSION			
35	0301855	1	SEEGERRING	CIRCLIP	ANNEAU DE RETENUE			
36	1562921	1	SCHUTZ	PROTECTION	PROTECTION			
37	0863138	2	SCHEIBE A3C	WASHER A3C	RONDELLE A3C			
38	0312881	2	SECHSKANTSCHRAUBE	BOLT	VIS A TETE SIX PANS			
39	0863105	3	FEDERRING A3C	SPRING WASHER A3C	RONDELLE A RESSORT A3C			
40	0322792	3	SECHSKANTSCHRAUBE	BOLT	VIS A TETE SIX PANS			
41	0474159	1	SECHSKTSHR Z B A3C	BOLT Z B A3C	VIS A TETE SIX PA Z B A3C			
42 V	0863105	1	FEDERRING A3C	SPRING WASHER A3C	RONDELLE A RESSORT A3C			
43	0300569	1	SCHMIERNIPPEL	GREASE NIPPLE	GRAISSEUR			
44	1562874	1	AUSSENROHR	OUTER PIPE	TUYAU EXTERIEUR	POS. 41-43, 49		
45	2045325	1	TYPENSCHILD	NAMEPLATE	PLAQUE SIGNALETIQUE			
46	0375955	4	KERBNAGEL	NOTCHED NAIL	CLOU A ENCOCHE			
47	0431705	17	SCHEIBE	WASHER	RONDELLE			
48	0860602	17	SECHSKANTMU A3C	NUT A3C	ECROU A SIX PANS A3C			
49 V	0197824	1	LAGERBUCHSE	BUSH	COUSSINET			
50	1308843	8	SECHSKTSHR A3C	BOLT A3C	VIS A TETE SIX PA A3C			
51 V	0863105	8	FEDERRING A3C	SPRING WASHER A3C	RONDELLE A RESSORT A3C			
52	1562910	1	MOTORFLANSCH	MOTOR FLANGE	BRIDE DU MOTEUR			
53	0321360	8	ISKA SCHRAUBE A3C	ALLEN SCREW A3C	VIS A TROU SIX PANS A3C			
54 V	1307013	8	FEDERRING A3C	SPRING WASHER A3C	RONDELLE A RESSORT A3C			
55 V	0054253	1	ZAHNRAD	GEAR WHEEL	ROUE DENTEE			
56	0054242	1	LAGERROHR	02 BEARING PIPE	02 TUYAU	02		
57 V	1276957	2	BOLZEN 40X 185/30X2	PIN 40X 185/30X2	BOULON 40X 185/30X2			
58 V	1307217	2	SPLINT A3C	SPLIT PIN A3C	GOUPILLE FENDUE A3C			
59	1321475	2	KRONENMUTTER A3C	CROWN NUT A3C	ECROU CRENELE A3C			
60	1113451	1	GEHAEUSE	HOUSING	CARTER			
61 V	1368709	1	KUGELLAGER	BALL BEARING	ROULEMENT A BILLES			
62 V	1113166	1	ANTRIEBSRITZEL	DRIVING PINION	PIGNON DE COMMANDE			
63	1384243	4	ISKA SCHRAUBE A3C	ALLEN SCREW A3C	VIS A TROU SIX PANS A3C			



POS NO.	CO DE	ORDER NO.	STK QNT	BENENNUNG	DESCRIPTION	DESIGNATION	BEMERKUNG, REMARK, REMARQUE	14.05.90
64 V		1307013	4	FEDERRING A3C	SPRING WASHER A3C	RONDELLE A RESSORT A3C		
65 V		1368696	1	KUGELLAGER	BALL BEARING	ROULEMENT A BILLES		
66		0300536	1	SEEGERRING	CIRCLIP	ANNEAU DE RETENUE		
67			1	DOPPELRUECKSCHLAGV	DOUBLE NON RET VALVE	SOUPAPE DE RETENUE DOUBLE TAF.FIG.PLAN.070.031.02.0..0110		
68		1321464	4	ISKA SCHRAUBE A3C	ALLEN SCREW A3C	VIS A TROU SIX PANS A3C		
69 V		0892940	4	FEDERRING A3C	SPRING WASHER A3C	RONDELLE A RESSORT A3C		
70 D		0300990	2	FLACHDICHTUNG A	FLAT PACKING A	JOINT PLAT A		
71		0893678	2	VERSCHRAUBUNG A3C	COUPLING A3C	RACCORD A3C		
72 D		0319775	2	O-RING	O-RING	JOINT ANNULAIRE		
73		0339111	2	KUPPLUNG MINIMESS	MINI-MEASUR COUPLING	ACCOUPEMENT MINI-MESURE		
74 D		0311937	2	O-RING	O-RING	JOINT ANNULAIRE		
75		1308843	2	SECHSKTSHR A3C	BOLT A3C	VIS A TETE SIX PA A3C		
76 V		0863105	2	FEDERRING A3C	SPRING WASHER A3C	RONDELLE A RESSORT A3C		
77		0844919	1	OELMOTOR	OIL MOTOR	MOTEUR HYDRAULIQUE		
78		0483649	2	VERSCHRAUBUNG A3C	COUPLING A3C	RACCORD A3C		
79		0456044	2	SCHLAUCHLEITUNG SL 10X1600 N	HOSE LINE HA 10X1600 N	CONDUITE TUYAU FLEXIBLE ENS FLE 10X1600 N	N	DF 09042
80		0318581	2	STAUBSTECKER	PROTECTING PLUG	FICHE DE PROTECTION	TAF.FIG.PLAN.070.150.00.0..4003	
81		0481976	2	SCHNELLV KUPPL M D	QUICK REL COUPL SO D	ATTACHE RAPIDE MANCHON D	TAF.FIG.PLAN.070.150.00.0..4003	
82 V		0324227	2	PASSFEDER	KEY	CLAVETTE		
83			1	ZYLINDER115/ 70/ 400	RAM 115/ 70/ 400	VERIN 115/ 70/ 400	TAF.FIG.PLAN.090.012.01.0..0134	

AB FABR.NR.4001

FROM SERIAL NO.4001 A PARTIR DU NO.DE FAB4001